




 2018

LUVAS E TERMINAIS PARA CABOS

■ LUVAS E TERMINAIS PARA CABOS

Descrição	Propriedades	Certificações	Página
HELU-S-RK-CU	Ponteira reta sem isolamento		988
HELU-S-RK-CU-UL	Ponteira sem isolamento		989
HELU-S-RK-F-CU	Ponteira sem isolamento		991
HELU-S-PK-CU-DIN	Ponteira reta sem isolamento		993
HELU-S-PK-AL-DIN	Ponteira reta, com alívio de tensão sem isolamento		995
ADI	Luva com isolamento		996
ADU	Luva com isolamento		998
AV	Conector para cabo de telecomunicações e de sinal		999

HELU-S-RK-CU

Ponteira reta sem isolamento



Ponteira HELU-S-RK-CU

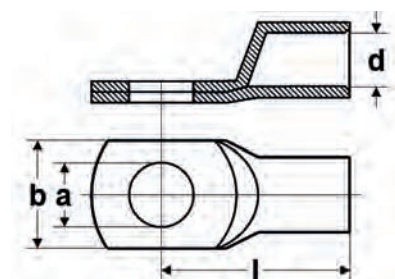
Ponteira de cabo sem isolamento, apenas tubular no projeto do anel.

Material

- Soquete: cobre de acordo com a DIN EN 13600
- Superfície: estanhado e galvanizado

Dados técnicos

- Faixa de temperatura: até +120°C



dimensões

- a Diâmetro do furo
- d Diâmetro interno da inserção do cabo
- b Largura da flange
- l Comprimento até o meio do buraco

Cód.	Tipo	Sec. transversal mm ²	a mm	d mm	b mm	l mm	Código Tipo	Peso kg / 1000 unidades	VPE peça
907303	HELU-S-RK-CU 0,75-3	0,75	3,2	1,4	6,5	12,5	-	0,7	100
907304	HELU-S-RK-CU 0,75-4	0,75	4,3	1,4	8,5	14,0	-	0,8	100
907305	HELU-S-RK-CU 0,75-5	0,75	5,3	1,4	10,0	15,0	-	1,0	100
907306	HELU-S-RK-CU 1,5-3	1,5	3,2	1,9	6,5	14,0	-	1,2	100
907307	HELU-S-RK-CU 1,5-4	1,5	4,3	1,9	8,5	15,0	-	1,4	100
907309	HELU-S-RK-CU 1,5-6	1,5	6,4	1,9	11,0	18,0	-	1,7	100
907311	HELU-S-RK-CU 2,5-5	2,5	5,3	2,4	10,0	16,0	-	1,8	100
907312	HELU-S-RK-CU 2,5-6	2,5	6,4	2,4	11,0	18,0	-	1,9	100
907313	HELU-S-RK-CU 2,5-8	2,5	8,4	2,4	13,0	20,0	-	2,2	100
907314	HELU-S-RK-CU 4-4	4,0	4,3	3,0	8,5	17,0	-	2,2	100
907315	HELU-S-RK-CU 4-5	4,0	5,3	3,0	10,0	18,0	-	2,4	100
907316	HELU-S-RK-CU 4-6	4,0	6,3	3,0	11,0	20,0	-	2,6	100
907317	HELU-S-RK-CU 4-8	4,0	8,4	3,0	14,0	22,0	-	3,0	100

As dimensões e especificações podem ser alteradas sem aviso prévio..

HELU-S-RK-CU-UL

Ponteira sem isolamento



Ponteira HELU-S-RK-CU-UL

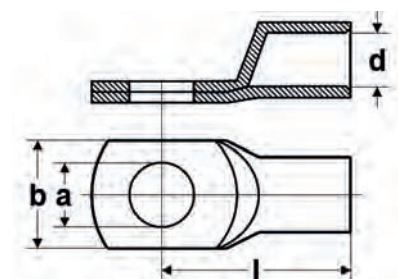
Ponteiros sem isolamento, apenas tubular no projeto do anel.

Material

- Soquete: cobre de acordo com DIN EN 13600
- Superfície: estanhado e galvanizado

Dados técnicos

- Faixa de temperatura: até +120°C



dimensões

- a Diâmetro do furo
- d Diâmetro interno da inserção do cabo
- b Largura da flange
- l Comprimento até o meio do buraco

Cód.	Tipo	Sec. transversal mm ²	a mm	d mm	b mm	l mm	Código Tipo	Peso kg / 1000 unidades	VPE peça
907318	HELU-S-RK-CU-UL 6-4	6,0	4,3	3,5	10,0	19,0	-	4,6	100
907319	HELU-S-RK-CU-UL 6-5	6,0	5,3	3,5	10,0	20,0	-	4,7	100
907320	HELU-S-RK-CU-UL 6-6	6,0	6,4	3,5	11,0	21,5	-	5,4	100
907321	HELU-S-RK-CU-UL 6-8	6,0	8,4	3,5	15,0	24,0	-	5,9	100
907322	HELU-S-RK-CU-UL 6-10	6,0	10,5	3,5	18,0	26,0	-	6,4	100
907323	HELU-S-RK-CU-UL 6-12	6,0	13,0	3,5	19,0	27,5	-	6,4	100
907324	HELU-S-RK-CU-UL 10-4	10,0	4,3	4,5	12,0	20,0	-	4,3	100
907325	HELU-S-RK-CU-UL 10-5	10,0	5,3	4,5	12,0	21,0	-	4,8	100
907326	HELU-S-RK-CU-UL 10-6	10,0	6,4	4,5	12,0	22,5	-	5,1	100
907327	HELU-S-RK-CU-UL 10-8	10,0	8,4	4,5	15,0	25,0	-	5,8	100
907328	HELU-S-RK-CU-UL 10-10	10,0	10,5	4,4	18,0	27,0	-	6,3	100
907329	HELU-S-RK-CU-UL 10-12	10,0	13,0	4,5	20,0	28,5	-	6,3	100
907330	HELU-S-RK-CU-UL 16-4	16,0	4,3	5,5	12,0	24,0	-	8,2	100
907331	HELU-S-RK-CU-UL 16-5	16,0	5,3	5,5	12,0	25,0	-	8,9	100
907332	HELU-S-RK-CU-UL 16-6	16,0	6,4	5,5	12,0	26,5	-	9,6	100
907333	HELU-S-RK-CU-UL 16-8	16,0	8,4	5,5	15,0	29,0	-	10,3	100
907334	HELU-S-RK-CU-UL 16-10	16,0	10,5	5,5	18,0	31,0	-	11,0	100
907335	HELU-S-RK-CU-UL 16-12	16,0	13,0	5,5	19,0	32,0	-	10,8	100
907336	HELU-S-RK-CU-UL 25-5	25,0	5,3	7,0	15,0	33,5	-	13,5	100
907337	HELU-S-RK-CU-UL 25-6	25,0	6,4	7,0	15,0	31,5	-	13,1	100
907338	HELU-S-RK-CU-UL 25-8	25,0	8,4	7,0	16,0	33,0	-	12,9	100
907339	HELU-S-RK-CU-UL 25-10	25,0	10,5	7,0	18,0	34,5	-	14,6	100
907340	HELU-S-RK-CU-UL 25-12	25,0	13,0	7,0	20,0	36,0	-	15,5	100
907341	HELU-S-RK-CU-UL 25-14	25,0	15,0	7,0	22,0	39,0	-	16,6	100
907342	HELU-S-RK-CU-UL 25-16	25,0	17,0	7,0	24,0	42,0	-	17,3	100
907343	HELU-S-RK-CU-UL 35-6	35,0	6,4	8,5	17,0	33,0	-	20,7	100
907344	HELU-S-RK-CU-UL 35-8	35,0	8,4	8,5	17,0	34,0	-	21,8	100
907345	HELU-S-RK-CU-UL 35-10	35,0	10,5	8,5	20,0	36,5	-	21,9	100
907346	HELU-S-RK-CU-UL 35-12	35,0	13,0	8,5	22,0	37,5	-	23,3	100
907347	HELU-S-RK-CU-UL 35-14	35,0	15,0	8,5	23,0	40,0	-	24,4	100

Continuação ►

HELU-S-RK-CU-UL

Ponteira sem isolamento



Cód.	Tipo	Sec. transversal mm ²	a mm	d mm	b mm	l mm	Código Tipo	Peso kg / 1000 unidades	VPE peça
907348	HELU-S-RK-CU-UL 35-16	35,0	17,0	8,5	28,0	44,0	-	26,0	100
907349	HELU-S-RK-CU-UL 50-6	50,0	6,4	10,0	20,0	37,0	-	30,1	100
907350	HELU-S-RK-CU-UL 50-8	50,0	8,4	10,0	20,0	39,0	-	30,4	100
907351	HELU-S-RK-CU-UL 50-10	50,0	10,5	10,0	20,0	40,5	-	31,3	100
907352	HELU-S-RK-CU-UL 50-12	50,0	13,0	10,0	23,0	42,0	-	31,3	100
907353	HELU-S-RK-CU-UL 50-14	50,0	15,0	10,0	23,0	44,0	-	35,1	100
907354	HELU-S-RK-CU-UL 50-16	50,0	17,0	10,0	27,0	46,0	-	35,5	100
907355	HELU-S-RK-CU-UL 50-20	50,0	21,0	10,0	30,5	52,5	-	38,9	100
907356	HELU-S-RK-CU-UL 70-6	70,0	6,4	12,0	24,0	40,5	-	41,1	25
907357	HELU-S-RK-CU-UL 70-8	70,0	8,4	12,0	24,0	42,5	-	44,6	25
907358	HELU-S-RK-CU-UL 70-10	70,0	10,5	12,0	24,0	43,5	-	46,4	25
907359	HELU-S-RK-CU-UL 70-12	70,0	13,0	12,0	24,0	45,0	-	47,3	25
907360	HELU-S-RK-CU-UL 70-14	70,0	15,0	12,0	25,0	46,0	-	49,1	25
907361	HELU-S-RK-CU-UL 70-16	70,0	17,0	12,0	28,0	48,5	-	49,6	25
907362	HELU-S-RK-CU-UL 70-20	70,0	21,0	12,0	29,0	52,0	-	52,9	25
907363	HELU-S-RK-CU-UL 95-6	95,0	6,4	13,5	26,0	43,0	-	49,5	25
907364	HELU-S-RK-CU-UL 95-8	95,0	8,4	13,5	26,0	46,0	-	53,6	25
907365	HELU-S-RK-CU-UL 95-10	95,0	10,5	13,5	26,0	47,0	-	55,1	25
907366	HELU-S-RK-CU-UL 95-12	95,0	13,0	13,5	26,0	48,0	-	55,1	25
907367	HELU-S-RK-CU-UL 95-14	95,0	15,0	13,5	26,0	51,5	-	58,9	25
907368	HELU-S-RK-CU-UL 95-16	95,0	17,0	13,5	28,0	51,0	-	58,5	25
907369	HELU-S-RK-CU-UL 95-20	95,0	21,0	13,5	30,0	55,0	-	61,3	25
907370	HELU-S-RK-CU-UL 120-8	120,0	8,4	15,0	29,0	49,5	-	68,8	25
907371	HELU-S-RK-CU-UL 120-10	120,0	10,5	15,0	29,0	52,0	-	79,9	25
907372	HELU-S-RK-CU-UL 120-12	120,0	13,0	15,0	29,0	51,5	-	78,4	25
907373	HELU-S-RK-CU-UL 120-14	120,0	15,0	15,0	30,0	53,0	-	78,6	25
907374	HELU-S-RK-CU-UL 120-16	120,0	17,0	15,0	30,0	55,0	-	80,7	25
907375	HELU-S-RK-CU-UL 120-20	120,0	21,0	15,0	35,0	60,0	-	89,0	25
907376	HELU-S-RK-CU-UL 150-8	150,0	8,4	16,8	31,0	55,5	-	78,9	25
907377	HELU-S-RK-CU-UL 150-10	150,0	10,5	16,8	31,0	56,5	-	83,7	25
907378	HELU-S-RK-CU-UL 150-12	150,0	13,0	16,8	31,0	56,0	-	80,7	25
907379	HELU-S-RK-CU-UL 150-14	150,0	15,0	16,8	31,0	57,0	-	83,0	25
907380	HELU-S-RK-CU-UL 150-16	150,0	17,0	16,8	31,0	58,0	-	83,6	25
907381	HELU-S-RK-CU-UL 150-20	150,0	21,0	16,8	35,0	63,0	-	87,5	25
907382	HELU-S-RK-CU-UL 185-8	185,0	8,4	19,0	35,0	58,0	-	103,7	25
907383	HELU-S-RK-CU-UL 185-10	185,0	10,5	19,0	35,0	59,0	-	106,1	25
907384	HELU-S-RK-CU-UL 185-12	185,0	13,0	19,0	35,0	58,5	-	106,0	25
907385	HELU-S-RK-CU-UL 185-14	185,0	15,0	19,0	35,0	61,0	-	107,2	25
907386	HELU-S-RK-CU-UL 185-16	185,0	17,0	19,0	35,0	63,0	-	108,6	25
907387	HELU-S-RK-CU-UL 185-20	185,0	21,0	19,0	35,0	66,0	-	113,3	25
907388	HELU-S-RK-CU-UL 240-8	240,0	8,4	21,0	38,0	67,0	-	124,0	25
907389	HELU-S-RK-CU-UL 240-10	240,0	10,5	21,0	38,0	67,0	-	129,7	25
907390	HELU-S-RK-CU-UL 240-12	240,0	13,0	21,0	38,0	67,0	-	130,2	25
907391	HELU-S-RK-CU-UL 240-14	240,0	15,0	21,0	38,0	69,0	-	133,6	25
907392	HELU-S-RK-CU-UL 240-16	240,0	17,0	21,0	38,0	69,5	-	135,6	20
907393	HELU-S-RK-CU-UL 240-20	240,0	21,0	21,0	38,0	71,0	-	138,0	25
907394	HELU-S-RK-CU-UL 300-10	300,0	10,5	24,0	44,0	79,5	-	204,5	20
907395	HELU-S-RK-CU-UL 300-12	300,0	13,0	24,0	44,0	82,0	-	211,8	20
907396	HELU-S-RK-CU-UL 300-14	300,0	15,0	24,0	44,0	84,0	-	221,9	20
907397	HELU-S-RK-CU-UL 300-16	300,0	17,0	24,0	44,0	85,0	-	219,4	20
907398	HELU-S-RK-CU-UL 300-20	300,0	21,0	24,0	44,0	85,0	-	224,0	20
907399	HELU-S-RK-CU-UL 400-10	400,0	10,5	27,5	49,0	92,0	-	279,0	15
907400	HELU-S-RK-CU-UL 400-12	400,0	13,0	27,5	49,0	92,0	-	278,5	15
907401	HELU-S-RK-CU-UL 400-16	400,0	17,0	27,5	49,0	92,0	-	276,5	15
907402	HELU-S-RK-CU-UL 400-20	400,0	21,0	27,5	49,0	92,0	-	266,1	15
907403	HELU-S-RK-CU-UL 500-12	500,0	13,0	31,0	55,5	113,0	-	493,8	5
907404	HELU-S-RK-CU-UL 500-16	500,0	17,0	31,0	55,5	113,0	-	493,8	5
907405	HELU-S-RK-CU-UL 500-20	500,0	21,0	31,0	55,5	113,0	-	485,6	5
907406	HELU-S-RK-CU-UL 630-16	630,0	17,0	34,0	60,0	115,0	-	513,5	5
907407	HELU-S-RK-CU-UL 630-20	630,0	21,0	34,0	60,0	115,0	-	506,0	5

As dimensões e especificações podem ser alteradas sem aviso prévio..

HELU-S-RK-F-CU

Ponteira sem isolamento



Ponteira HELU-S-RK-F-CUT

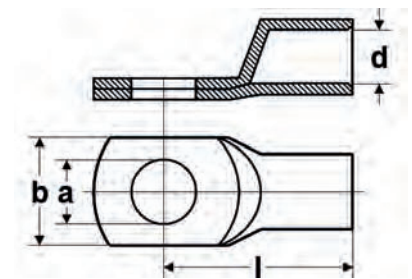
Ponteiras sem isolamento, apenas tubular em projeto de anel para condutores de fio fino. Expandiu-se para a criação do melhor contato.

Material

- Soquete: cobre de acordo com a DIN EN 13600
- Superfície: estanhado e galvanizado

Dados técnicos

- Faixa de temperatura: até +120°C



dimensões

- a Diâmetro do furo
- d Diâmetro interno da inserção do cabo
- b Largura da flange
- l Comprimento até o meio do buraco

Cód.	Tipo	Sec. transversal mm ²	a mm	d mm	b mm	l mm	Código Tipo	Peso kg / 1000 unidades	VPE peça
907409	HELU-S-RK-F-CU 10-5	10,0	5,3	5,0	12,0	23,0	-	7,0	100
907410	HELU-S-RK-F-CU 10-6	10,0	6,4	5,0	12,0	25,0	-	7,6	100
907411	HELU-S-RK-F-CU 10-8	10,0	8,4	5,0	15,0	28,0	-	8,9	100
907412	HELU-S-RK-F-CU 10-10	10,0	10,5	5,0	18,0	31,0	-	9,8	100
907413	HELU-S-RK-F-CU 10-12	10,0	13,0	5,0	20,0	32,0	-	10,0	100
907414	HELU-S-RK-F-CU 16-5	16,0	5,3	6,0	14,0	25,5	-	9,4	100
907415	HELU-S-RK-F-CU 16-6,4	16,0	6,4	6,0	14,0	27,0	-	10,0	100
907416	HELU-S-RK-F-CU 16-8	16,0	8,4	6,0	15,0	29,5	-	11,2	100
907417	HELU-S-RK-F-CU 16-10	16,0	10,5	6,0	18,0	32,0	-	11,2	100
907418	HELU-S-RK-F-CU 16-12	16,0	13,0	6,0	20,0	33,0	-	11,8	100
907419	HELU-S-RK-F-CU 25-6	25,0	6,4	7,7	16,0	32,0	-	14,7	100
907420	HELU-S-RK-F-CU 25-8	25,0	8,4	7,7	16,0	34,0	-	14,3	100
907421	HELU-S-RK-F-CU 25-10	25,0	10,5	7,7	18,0	35,0	-	15,3	100
907422	HELU-S-RK-F-CU 25-12	25,0	13,0	7,7	20,0	36,0	-	16,1	100
907423	HELU-S-RK-F-CU 25-16	25,0	17,0	7,7	26,0	40,5	-	19,1	100
907424	HELU-S-RK-F-CU 35-6	35,0	6,4	9,2	18,0	36,0	-	20,7	100
907425	HELU-S-RK-F-CU 35-8	35,0	8,4	9,2	18,0	36,0	-	20,7	100
907426	HELU-S-RK-F-CU 35-10	35,0	10,5	9,2	18,0	38,0	-	21,4	100
907427	HELU-S-RK-F-CU 35-12	35,0	13,0	9,2	23,0	40,0	-	22,2	100
907428	HELU-S-RK-F-CU 35-16	35,0	17,0	9,2	26,0	45,0	-	24,2	100
907429	HELU-S-RK-F-CU 50-6	50,0	6,4	11,2	22,0	42,0	-	32,5	100
907430	HELU-S-RK-F-CU 50-8	50,0	8,4	11,2	22,0	42,0	-	32,2	100
907431	HELU-S-RK-F-CU 50-10	50,0	10,5	11,2	22,0	43,0	-	33,3	100
907432	HELU-S-RK-F-CU 50-12	50,0	13,0	11,2	23,0	44,0	-	33,9	100
907433	HELU-S-RK-F-CU 50-14	50,0	15,0	11,2	25,0	45,5	-	36,0	100
907434	HELU-S-RK-F-CU 50-16	50,0	17,0	11,2	28,0	48,5	-	36,5	100

Continuação ►

HELU-S-RK-F-CU

Ponteira sem isolamento

Cód.	Tipo	Sec. transversal mm ²	a mm	d mm	b mm	l mm	Código Tipo	Peso kg / 1000 unidades	VPE peça
907435	HELU-S-RK-F-CU 70-6	70,0	6,4	13,5	25,0	46,0	-	44,3	50
907436	HELU-S-RK-F-CU 70-8	70,0	8,4	13,5	25,0	45,5	-	48,0	50
907437	HELU-S-RK-F-CU 70-10	70,0	10,5	13,5	25,0	47,0	-	48,4	50
907438	HELU-S-RK-F-CU 70-12	70,0	13,0	13,5	26,0	47,0	-	48,4	50
907439	HELU-S-RK-F-CU 70-16	70,0	17,0	13,5	28,0	50,0	-	50,5	50
907440	HELU-S-RK-F-CU 70-20	70,0	21,0	13,5	31,0	54,5	-	55,2	50
907441	HELU-S-RK-F-CU 95-6	95,0	6,4	15,5	29,0	50,5	-	65,0	50
907442	HELU-S-RK-F-CU 95-8	95,0	8,4	15,5	29,0	50,5	-	66,2	50
907443	HELU-S-RK-F-CU 95-10	95,0	10,5	15,5	29,0	53,0	-	71,5	50
907444	HELU-S-RK-F-CU 95-12	95,0	13,0	15,5	29,0	52,5	-	71,1	50
907445	HELU-S-RK-F-CU 95-16	95,0	17,0	15,5	29,0	55,0	-	71,9	50
907446	HELU-S-RK-F-CU 95-20	95,0	21,0	15,5	35,0	60,0	-	76,1	50
907447	HELU-S-RK-F-CU 120-10	120,0	10,5	16,8	31,0	56,5	-	80,7	50
907448	HELU-S-RK-F-CU 120-12	120,0	13,0	16,8	31,0	56,0	-	80,7	50
907449	HELU-S-RK-F-CU 120-16	120,0	17,0	16,8	31,0	58,0	-	83,6	50
907450	HELU-S-RK-F-CU 120-20	120,0	21,0	16,8	35,0	63,0	-	87,5	50
907451	HELU-S-RK-F-CU 150-10	150,0	10,5	19,0	35,0	59,0	-	104,0	25
907452	HELU-S-RK-F-CU 150-12	150,0	13,0	19,0	35,0	58,5	-	106,2	25
907453	HELU-S-RK-F-CU 150-16	150,0	17,0	19,0	35,0	63,0	-	111,9	25
907454	HELU-S-RK-F-CU 150-20	150,0	21,0	19,0	35,0	66,0	-	116,1	25
907455	HELU-S-RK-F-CU 185-10	185,0	10,5	21,0	38,0	67,0	-	130,3	25
907456	HELU-S-RK-F-CU 185-13	185,0	13,0	21,0	38,0	67,0	-	121,5	25
907457	HELU-S-RK-F-CU 185-16	185,0	17,0	21,0	38,0	69,5	-	128,8	25
907458	HELU-S-RK-F-CU 185-20	185,0	21,0	21,0	38,0	71,0	-	139,5	25
907459	HELU-S-RK-F-CU 240-12	240,0	13,0	24,0	44,0	82,0	-	214,0	20
907460	HELU-S-RK-F-CU 240-16	240,0	17,0	24,0	44,0	85,0	-	219,4	20
907461	HELU-S-RK-F-CU 240-20	240,0	21,0	24,0	44,0	85,0	-	222,0	20

As dimensões e especificações podem ser alteradas sem aviso prévio..

HELU-S-PK-CU-DIN

Ponteira reta sem isolamento

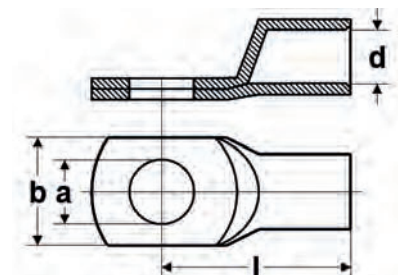


Ponteira reta HELU-S-PK-CU-DIN

Ponteira não isoladas em desenho de anel para condução RM, 46235 DIN

Material

- Soquete: cobre de acordo com a DIN EN 13600
- Superfície: estanhado, opcionalmente em branco



dimensões

- a Diâmetro do furo
- d Diâmetro interno da inserção do cabo
- b Largura da flange
- l Comprimento até o meio do buraco

Cód.	Tipo	Sec. transversal mm ²	a mm	d mm	b mm	l mm	Código Tipo	Peso kg / 1000 unidades	VPE peça	
907677	HELU-S-PK-CU-DIN 6-5	6,0	5,3	3,7	8,5	24,0	5	3,1	100	-
907678	HELU-S-PK-CU-DIN 6-6	6,0	6,4	3,7	3,7	24,0	5	3,4	100	-
907680	HELU-S-PK-CU-DIN 10-5	10,0	5,3	4,4	10,0	27,0	6	3,5	100	-
907681	HELU-S-PK-CU-DIN 10-6	10,0	6,4	4,4	10,0	27,0	6	3,7	100	-
907685	HELU-S-PK-CU-DIN 16-6	16,0	6,4	5,5	13,0	36,0	8	12,7	100	-
907686	HELU-S-PK-CU-DIN 16-8	16,0	8,4	5,5	13,0	37,0	8	13,0	100	-
907687	HELU-S-PK-CU-DIN 16-10	16,0	10,5	5,5	16,5	38,0	8	13,2	100	-
907689	HELU-S-PK-CU-DIN 25-6	25,0	6,4	7,0	14,0	39,0	10	16,2	100	-
907690	HELU-S-PK-CU-DIN 25-8	25,0	8,4	7,0	17,0	39,0	10	17,3	100	-
907691	HELU-S-PK-CU-DIN 25-10	25,0	10,5	7,0	17,0	40,5	10	17,7	100	-
907692	HELU-S-PK-CU-DIN 25-12	25,0	13,0	7,0	18,0	40,5	10	17,2	100	-
907695	HELU-S-PK-CU-DIN 35-8	35,0	8,4	8,2	18,0	42,0	12	31,9	100	-
907696	HELU-S-PK-CU-DIN 35-10	35,0	10,5	8,2	20,0	42,5	12	31,7	100	-
907697	HELU-S-PK-CU-DIN 35-12	35,0	13,0	8,2	21,0	44,0	12	31,1	100	-
907701	HELU-S-PK-CU-DIN 50-8	50,0	8,4	9,8	20,0	52,0	14	50,0	100	-
907702	HELU-S-PK-CU-DIN 50-10	50,0	10,5	9,8	22,0	52,0	14	49,4	100	-
907703	HELU-S-PK-CU-DIN 50-12	50,0	13,0	9,8	23,0	52,0	14	49,1	100	-
907705	HELU-S-PK-CU-DIN 50-16	50,0	17,0	9,8	28,0	55,5	14	50,4	100	-
907707	HELU-S-PK-CU-DIN 70-8	70,0	8,4	11,3	24,0	56,0	16	65,4	50	-
907708	HELU-S-PK-CU-DIN 70-10	70,0	10,5	11,3	24,0	56,0	16	65,4	50	-
907709	HELU-S-PK-CU-DIN 70-12	70,0	13,0	11,3	24,0	56,5	16	65,7	50	-
907711	HELU-S-PK-CU-DIN 70-16	70,0	17,0	11,3	29,0	57,0	16	69,2	50	-
906524	HELU-S-PK-CU-DIN 95-10	95,0	10,5	13,5	28,0	65,5	18	95,5	50	-
906525	HELU-S-PK-CU-DIN 95-12	95,0	13,0	13,5	28,0	65,5	18	94,5	50	-
907715	HELU-S-PK-CU-DIN 95-16	95,0	17,0	13,5	30,0	65,5	18	94,4	50	-
907716	HELU-S-PK-CU-DIN 95-20	95,0	21,0	13,5	33,0	71,0	18	98,6	50	-
906526	HELU-S-PK-CU-DIN 120-10	120,0	10,5	15,5	31,0	70,0	20	114,0	50	-
906527	HELU-S-PK-CU-DIN 120-12	120,0	13,0	15,5	31,0	70,5	20	114,3	50	-
907719	HELU-S-PK-CU-DIN 120-16	120,0	17,0	15,5	31,5	70,0	20	113,6	50	-
907720	HELU-S-PK-CU-DIN 120-20	120,0	21,0	15,5	36,0	72,0	20	115,1	50	-
907722	HELU-S-PK-CU-DIN 150-10	150,0	10,5	17,0	34,0	79,0	22	164,6	25	-
906528	HELU-S-PK-CU-DIN 150-12	150,0	13,0	17,0	34,0	78,5	22	165,3	25	-
906529	HELU-S-PK-CU-DIN 150-16	150,0	17,0	17,0	34,0	78,0	22	163,5	25	-
907724	HELU-S-PK-CU-DIN 150-20	150,0	21,0	17,0	38,0	78,0	22	163,4	25	-
907726	HELU-S-PK-CU-DIN 185-10	185,0	10,5	19,0	37,0	83,0	25	185,0	25	-
906530	HELU-S-PK-CU-DIN 185-12	185,0	13,0	19,0	37,0	82,5	25	189,5	25	-
906531	HELU-S-PK-CU-DIN 185-16	185,0	17,0	19,0	37,0	82,0	25	194,1	25	-

Continuação ▶

HELU-S-PK-CU-DIN

Ponteira reta sem isolamento

Cód.	Tipo	Sec. transversal mm ²	a mm	d mm	b mm	l mm	Código Tipo	Peso kg / 1000 unidades	VPE peça	
907728	HELU-S-PK-CU-DIN 185-20	185,0	21,0	19,0	40,0	83,0	25	190,1	25	-
906532	HELU-S-PK-CU-DIN 240-12	240,0	13,0	21,5	42,5	92,0	28	266,5	20	-
906533	HELU-S-PK-CU-DIN 240-16	240,0	17,0	21,5	42,5	92,0	28	274,5	20	-
907731	HELU-S-PK-CU-DIN 240-20	240,0	21,0	21,5	45,0	92,0	28	276,7	20	-
906534	HELU-S-PK-CU-DIN 300-16	300,0	17,0	24,5	48,5	100,0	32	341,6	10	-
906535	HELU-S-PK-CU-DIN 300-20	300,0	21,0	24,5	48,5	100,0	32	344,6	10	-
906536	HELU-S-PK-CU-DIN 400-16	400,0	17,0	27,5	55,0	117,0	38	717,5	5	-
906537	HELU-S-PK-CU-DIN 400-20	400,0	21,0	27,5	55,0	117,0	38	706,4	5	-
906538	HELU-S-PK-CU-DIN 500-20	500,0	21,0	31,0	60,0	130,0	42	876,6	5	-
907744	HELU-S-PK-CU-DIN 625-20	625,0	21,0	34,5	63,0	135,0	44	820,5	5	-
907747	HELU-S-PK-CU-DIN 800-20	800,0	21,0	40,0	75,0	165,0	100	1455,5	2	-
907749	HELU-S-PK-CU-DIN 1000-20	1000,0	21,0	44,0	83,0	167,0	58	1890,0	2	-

As dimensões e especificações podem ser alteradas sem aviso prévio..

HELU-S-PK-AL-DIN

Ponteira reta, com alívio de tensão sem isolamento



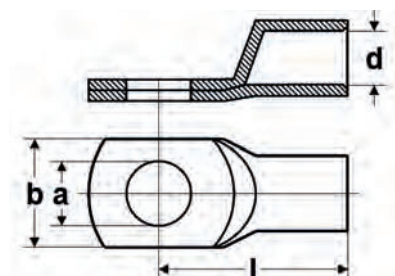
Ponteira reta HELU-S-PK-AL-DIN

Ponteira reta sem isolamento de alumínio no desenho do anel.

Design de alta qualidade para uma injeção de confiança. Adequado para RM de acordo com DIN.

Material

- AL 99,5
- Superfície: desencapado



dimensões

- a Diâmetro do furo
- d Diâmetro interno da inserção do cabo
- b Largura da flange
- l Comprimento até o meio do buraco

Cód.	Tipo	Sec. transversal RM/SM - SE mm ²	a mm	d mm	b mm	l mm	Código Tipo	Peso kg / 1000 unidades	VPE peça
907865	HELU-S-PK-AL-DIN 16-8	16,0 - 25,0	8,4	5,6	16,0	52,0	12	9,6	50
907866	HELU-S-PK-AL-DIN 16-10	16,0 - 25,0	10,5	5,6	18,0	52,0	12	9,7	50
907867	HELU-S-PK-AL-DIN 25-8	25,0 - 35,0	8,4	6,8	16,0	60,0	12	14,8	50
907868	HELU-S-PK-AL-DIN 25-10	25,0 - 35,0	10,5	6,8	18,0	60,0	12	15,3	50
907869	HELU-S-PK-AL-DIN 35-8	35,0 - 50,0	8,4	8,0	20,0	67,0	14	24,5	50
907870	HELU-S-PK-AL-DIN 35-10	35,0 - 50,0	10,5	8,0	20,0	67,0	14	24,5	50
907871	HELU-S-PK-AL-DIN 35-12	35,0 - 50,0	13,0	8,0	20,0	67,0	14	23,5	50
907872	HELU-S-PK-AL-DIN 50-8	50,0 - 70,0	8,4	10,0	23,0	74,0	16	32,9	25
907873	HELU-S-PK-AL-DIN 50-10	50,0 - 70,0	10,5	10,0	23,0	74,0	16	28,8	25
907874	HELU-S-PK-AL-DIN 50-12	50,0 - 70,0	13,0	10,0	23,0	74,0	16	33,8	25
907875	HELU-S-PK-AL-DIN 70-10	70,0 - 95,0	10,5	11,5	28,0	84,0	18	47,7	25
907876	HELU-S-PK-AL-DIN 70-12	70,0 - 95,0	13,0	11,5	28,0	87,0	18	47,3	25
907877	HELU-S-PK-AL-DIN 95-10	95,0 - 120,0	10,5	13,2	32,0	90,0	22	70,1	10
907878	HELU-S-PK-AL-DIN 95-12	95,0 - 120,0	13,0	13,2	32,0	90,0	22	78,2	10
907879	HELU-S-PK-AL-DIN 95-16	95,0 - 120,0	17,0	13,2	32,0	90,0	22	76,2	10
907880	HELU-S-PK-AL-DIN 120-10	120,0 - 150,0	10,5	14,7	32,0	98,0	22	83,8	10
907881	HELU-S-PK-AL-DIN 120-12	120,0 - 150,0	13,0	14,7	32,0	98,0	22	87,9	10
907882	HELU-S-PK-AL-DIN 120-16	120,0 - 150,0	17,0	14,7	32,0	98,0	22	86,4	10
906459	HELU-S-PK-AL-DIN 150-10	150,0 - 185,0	10,5	16,3	35,0	104,0	25	99,8	10
906436	HELU-S-PK-AL-DIN 150-12	150,0 - 185,0	13,0	16,3	35,0	104,0	25	102,3	10
906461	HELU-S-PK-AL-DIN 150-16	150,0 - 185,0	13,0	16,3	35,0	104,0	25	100,8	10
906462	HELU-S-PK-AL-DIN 150-20	150,0 - 185,0	21,0	16,3	35,0	104,0	25	100,2	10
907883	HELU-S-PK-AL-DIN 185-10	185,0 - 240,0	10,5	18,5	40,0	109,0	28	133,9	10
906463	HELU-S-PK-AL-DIN 185-12	185,0 - 240,0	13,0	18,5	40,0	109,0	28	133,9	10
906464	HELU-S-PK-AL-DIN 185-16	185,0 - 240,0	17,0	18,5	40,0	109,0	28	137,5	10
906465	HELU-S-PK-AL-DIN 185-20	185,0 - 240,0	21,0	18,5	40,0	109,0	28	137,5	10
907884	HELU-S-PK-AL-DIN 240-10	240,0 - 300,0	10,5	21,0	46,0	119,0	32	182,8	10
906466	HELU-S-PK-AL-DIN 240-12	240,0 - 300,0	13,0	21,0	46,0	119,0	32	179,4	10
906467	HELU-S-PK-AL-DIN 240-16	240,0 - 300,0	17,0	21,0	46,0	119,0	32	176,2	10
906468	HELU-S-PK-AL-DIN 240-20	240,0 - 300,0	21,0	21,0	46,0	119,0	32	179,0	10
906469	HELU-S-PK-AL-DIN 300-12	300,0	13,0	23,3	50,0	125,0	34	205,4	5
906470	HELU-S-PK-AL-DIN 300-16	300,0	17,0	23,3	50,0	125,0	34	201,4	5
906471	HELU-S-PK-AL-DIN 300-20	300,0	21,0	23,3	50,0	125,0	34	194,3	5
906472	HELU-S-PK-AL-DIN 400-12	400,0	13,0	26,0	55,0	120,0	38	283,0	5
906473	HELU-S-PK-AL-DIN 400-16	400,0	17,0	26,0	55,0	120,0	38	273,3	5
906474	HELU-S-PK-AL-DIN 400-20	400,0	21,0	26,0	55,0	120,0	38	240,0	5
906475	HELU-S-PK-AL-DIN 500-12	500,0	13,0	29,0	63,0	140,0	44	380,0	5
906476	HELU-S-PK-AL-DIN 500-16	500,0	17,0	29,0	63,0	140,0	44	378,0	5
906477	HELU-S-PK-AL-DIN 500-20	500,0	21,0	29,0	63,0	140,0	44	373,5	5

As dimensões e especificações podem ser alteradas sem aviso prévio..

ADI

Luva com isolamento

**ADI**

Luvas isoladas para evitar espalhamento de fios descascados.
O colar de plástico em forma de funil facilita empurrar os fios.
De acordo com o código de cor DIN, ZF, e Telemecanique.

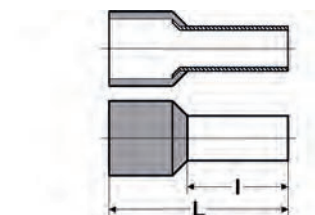
Material

- Soquete: cobre
Superfície: estanhado

Colar de isolamento: Polipropileno
livre de halogênio

Dados técnicos

- Faixa de temperatura: até +105°C
Faixa de temperatura temporária até +120°C

**dimensões**

- L Comprimento total
- I Comprimento do PINO

Cód.	Tamanho mm ²	Cor	Código de cores	Comprimento total mm	comprimento do pino mm	VPE peça	
91850	0,14 / normal	Marrom	Telemecanique	10,4	6,0	500	-
91851	0,14 / longo	Marrom	Telemecanique	12,4	8,0	500	-
91852	0,25 / normal	violeta	Telemecanique	10,4	6,0	500	-
91853	0,25 / normal	Azul claro	Z+F	10,4	6,0	500	-
91854	0,25 / longo	violeta	Telemecanique	12,4	8,0	500	-
91855	0,25 / longo	Azul claro	Z+F	12,4	8,0	500	-
91856	0,34 / normal	rosa	Telemecanique	10,4	6,0	500	-
91857	0,34 / normal	turquesa	Z+F	10,4	6,0	500	-
91858	0,34 / longo	rosa	Telemecanique	12,4	8,0	500	-
91859	0,34 / longo	turquesa	Z+F	12,4	8,0	500	-
91860	0,5 / curto	branco	DIN	12,0	6,0	500	-
91861	0,5 / curto	laranja	Z+F	12,0	6,0	500	-
91350	0,5 / normal	branco	DIN	14,0	8,0	500	-
91383	0,5 / normal	laranja	Z+F	14,0	8,0	500	-
91862	0,5 / meia longa	branco	DIN	16,0	10,0	500	-
91863	0,5 / meia longa	laranja	Z+F	16,0	10,0	500	-
91864	0,75 / curto	Azul claro	Telemecanique	12,4	6,0	500	-
91865	0,75 / curto	branco	Z+F	12,4	6,0	500	-
94023	0,75 / curto	cinza	DIN	12,4	6,0	500	-
91351	0,75 / normal	Azul claro	Telemecanique	14,6	8,0	500	-
91384	0,75 / normal	branco	Z+F	14,6	8,0	500	-
93030	0,75 / normal	cinza	DIN	14,6	8,0	500	-
91866	0,75 / meia longa	Azul claro	Telemecanique	16,4	10,0	500	-
91867	0,75 / meia longa	branco	Z+F	16,4	10,0	500	-
91868	0,75 / meia longa	cinza	DIN	16,4	10,0	500	-
91869	0,75 / longo	Azul claro	Telemecanique	18,4	12,0	500	-
91870	0,75 / longo	branco	Z+F	18,4	12,0	500	-

Contato 0010

ADI

Luva com isolamento

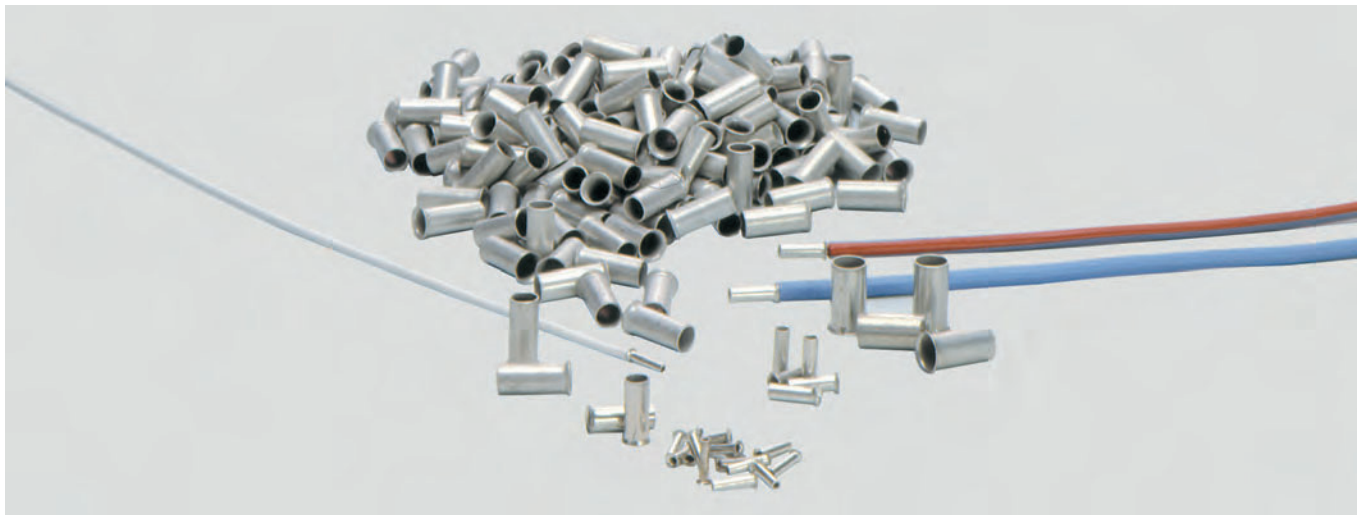


Cód.	Tamanho mm ²	Cor	Código de cores	Comprimento total mm	comprimento do pino mm	VPE peça	
91871	0,75 / longo	cinza	DIN	18,4	12,0	500	-
91872	1,0 / curto	vermelho	DIN	12,4	6,0	500	-
91873	1,0 / curto	amarelo	Z+F	12,4	6,0	500	-
91352	1,0 / normal	vermelho	DIN	14,6	8,0	500	-
91385	1,0 / normal	amarelo	Z+F	14,6	8,0	500	-
91874	1,0 / meia longa	vermelho	DIN	16,4	10,0	500	-
91875	1,0 / meia longa	amarelo	Z+F	16,4	10,0	500	-
91876	1,0 / longo	vermelho	DIN	18,4	12,0	500	-
91877	1,0 / longo	amarelo	Z+F	18,4	12,0	500	-
91353	1,5 / normal	preto	DIN	14,6	8,0	500	-
91386	1,5 / normal	vermelho	Z+F	14,6	8,0	500	-
91878	1,5 / meia longa	preto	DIN	16,4	10,0	500	-
91879	1,5 / meia longa	vermelho	Z+F	16,4	10,0	500	-
91880	1,5 / longo	preto	DIN	24,4	18,0	500	-
91881	1,5 / longo	vermelho	Z+F	24,4	18,0	500	-
91354	2,5 / normal	cinza	Telemecanique	15,2	8,0	500	-
91387	2,5 / normal	azul	DIN	15,2	8,0	500	-
91882	2,5 / meia longa	cinza	Telemecanique	19,0	12,0	500	-
91883	2,5 / meia longa	azul	DIN	19,0	12,0	500	-
91884	2,5 / longo	cinza	Telemecanique	25,0	18,0	500	-
91885	2,5 / longo	azul	DIN	25,0	18,0	500	-
91355	4,0 / normal	laranja	Telemecanique	16,5	10,0	500	-
91388	4,0 / normal	cinza	DIN	16,5	10,0	500	-
91886	4,0 / meia longa	laranja	Telemecanique	19,5	12,0	500	-
91887	4,0 / meia longa	cinza	DIN	19,5	12,0	500	-
91888	4,0 / longo	laranja	Telemecanique	25,5	18,0	500	-
91889	4,0 / longo	cinza	DIN	25,5	18,0	500	-
91356	6,0 / normal	verde	Telemecanique	20,0	12,0	100	-
91389	6,0 / normal	preto	Z+F	20,0	12,0	100	-
93031	6,0 / normal	amarelo	DIN	20,0	12,0	100	-
91890	6,0 / longo	verde	Telemecanique	26,0	18,0	100	-
91891	6,0 / longo	preto	Z+F	26,0	18,0	100	-
91892	6,0 / longo	amarelo	DIN	26,0	18,0	100	-
91357	10,0 / normal	Marron	Telemecanique	21,5	12,0	100	-
91390	10,0 / normal	marfim	Z+F	21,5	12,0	100	-
93032	10,0 / normal	vermelho	DIN	21,5	12,0	100	-
91893	10,0 / longo	Marron	Telemecanique	27,5	18,0	100	-
91894	10,0 / longo	marfim	Z+F	27,5	18,0	100	-
94024	10,0 / longo	vermelho	DIN	27,5	18,0	100	-
91895	16,0 / normal	marfim	Telemecanique	22,2	12,0	100	-
91896	16,0 / normal	verde	Z+F	22,2	12,0	100	-
91897	16,0 / normal	azul	DIN	22,2	12,0	100	-
91898	16,0 / longo	marfim	Telemecanique	28,2	18,0	100	-
91899	16,0 / longo	verde	Z+F	28,2	18,0	100	-
91900	16,0 / longo	azul	DIN	28,2	18,0	100	-
91359	25,0 / normal	preto	Telemecanique	29,0	16,0	50	-
91392	25,0 / normal	Marron	Z+F	29,0	16,0	50	-
93034	25,0 / normal	amarelo	DIN	29,0	16,0	50	-
91901	25,0 / longo	preto	Telemecanique	35,0	22,0	50	-
91902	25,0 / longo	Marron	Z+F	35,0	22,0	50	-
91903	25,0 / longo	amarelo	DIN	35,0	22,0	50	-
91393	35,0 / normal	vermelho	DIN	30,0	16,0	50	-
91394	35,0 / normal	bege	Z+F	30,0	16,0	50	-
91904	35,0 / longo	vermelho	DIN	39,0	25,0	50	-
91905	35,0 / longo	bege	Z+F	39,0	25,0	50	-
91395	50,0 / normal	azul	DIN	36,4	20,0	50	-
91396	50,0 / normal	verde-oliva	Z+F	36,4	20,0	50	-
91906	50,0 / longo	azul	DIN	41,0	25,0	50	-
91907	50,0 / longo	verde-oliva	Z+F	41,0	25,0	50	-
91908	70,0 / normal	amarelo	DIN	37,0	21,0	25	-
91397	70,0 / longo	amarelo	DIN	43,0	27,0	25	-
91909	95,0 / normal	vermelho	DIN	44,0	25,0	25	-
91910	120,0 / normal	azul	DIN	48,0	27,0	25	-
91911	150,0 / normal	amarelo	DIN	58,0	32,0	25	-

As dimensões e especificações podem ser alteradas sem aviso prévio..

ADU

Luva com isolamento



ADI

Luvras isoladas para evitar espalhamento de fios descascados.

O colar de plástico em forma de funil facilita empurrar os fios.

De acordo com o código de cor DIN, ZF, e Telemecanique.

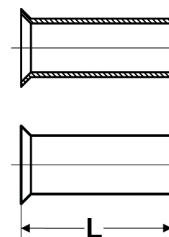
Material

- Soquete: cobre
Superfície: estanhado

Colar de isolamento: Polipropileno livre de halogênio

Dados técnicos

- Faixa de temperatura: até +105°C
Faixa de temperatura temporária até +120°C



dimensões

L Comprimento total

Cód.	Tamanho mm ²	Comprimento mm	VPE peça	
91368	0,5	6,0	1000	-
91370	0,5	10,0	1000	-
91371	0,75	6,0	1000	-
91372	0,75	8,0	1000	-
91373	1,0	6,0	1000	-
91374	1,0	10,0	1000	-
91375	1,5	7,0	1000	-
91376	1,5	10,0	1000	-
93096	2,5	7,0	1000	-
93097	2,5	10,0	1000	-
93099	4,0	9,0	1000	-
94000	4,0	12,0	1000	-
94001	6,0	10,0	250	-
94002	6,0	12,0	250	-
94003	6,0	15,0	250	-
94004	10,0	12,0	250	-
94005	10,0	15,0	250	-
94006	10,0	18,0	250	-
94007	16,0	12,0	250	-
94008	16,0	15,0	250	-
94009	16,0	18,0	250	-
94010	25,0	12,0	100	-
94011	25,0	15,0	100	-
94012	25,0	18,0	100	-
94013	25,0	25,0	100	-
94014	25,0	32,0	100	-
94015	35,0	18,0	100	-
94016	35,0	25,0	100	-
94018	35,0	32,0	100	-
94019	50,0	18,0	100	-
94020	50,0	22,0	100	-
94021	70,0	25,0	100	-
94022	70,0	32,0	100	-
91030	95,0	25,0	50	-
91031	95,0	32,0	50	-
96841	120,0	32,0	50	-

As dimensões e especificações podem ser alteradas sem aviso prévio..

AV

Conector para cabo de telecomunicações e de sinal



AV Conector de fios

Conector de condutor tipo **AV** para ligação de cabos de telecomunicações e de sinal com isolamento de plástico. Eles são caracterizados pela economia de espaço e estrutura fácil de instalar. Cumpre os requisitos da DIN 47627 (conexões de fios Solderless em mangas de cabos de telecomunicações). Durante a prensagem com a ferramenta AVZ, forças verticais são transmitidas uniformemente ao conector de fio, garantindo um contato fiável dos condutores de cobre transformados.

Propriedades

- alta resistência mecânica e térmica
- caixa de plástico resistente ao impacto
- proteção contra corrosão através da carga de graxa
- contato aprimorado através do princípio de contato em U
- diâmetros do condutor de até 2.0 mm
- maior alcance de aplicação de 0,4 a 0,9 mm de diâmetro do condutor
- Em uma ação de decapagem e conexão no campo

Volume de fornecimento

- Cor: transparente

Nota

- Os alicates de encaixe de condutor de fixação paralela ou equivalente são adequados para conectores de condutor de aperto de descarga.
- Use alicates de conexão de núcleo AVZ ou ferramenta igual.

Conector AV

Cód.	Tipo	Nº condutores	Ø condutor de - até mm	VPE peça	
93147	AV2	2	0,4 - 0,9	100	-
93148	AV3	3	0,4 - 0,9	100	-
93149	AVT3	3	0,4 - 0,9	100	-

Grampo de conexão para conduíte AVZ

Cód.	Tipo	Nº condutores	Ø condutor de - até mm	VPE peça	
93150	AVZ	-	-	1	-

As dimensões e especificações podem ser alteradas sem aviso prévio..

PV-Kupplungsstecker MC4



PV-conector de cabo, macho e fêmea MC4



PV-Soquete e Plug de acoplamento MC4

Com bloqueio Snap-in

Material

- Poliamida
- Contato: Cobre estanhado trançado

Dados técnicos

Classe de protecção: IP 67

Classe de protecção: II

Faixa de temperatura: -40°C até +90°C

Tensão nominal: 1000 V (IEC)

Corrente nominal: 22A (2,5 mm²), 30A (4mm², 6mm²)

Resistência do conector conectado: 0.35 mOhm

Cód.	Designação	Seção transversal do condutor mm ²	Ø do cabo mm	VPE peça
905206	PV-Plug de acoplamento MC4	2,5	3 - 6	50
905208		2,5	5,5 - 9	50
905210		4 - 6	3 - 6	50
904963		4 - 6	5,5 - 9	50
905863		10	5,5 - 9	50

Cód.	Designação	Seção transversal do condutor mm ²	Ø do cabo mm	VPE peça
905207	PV-Soquete de acoplamento MC4	2,5	3 - 6	50
905209		2,5	5,5 - 9	50
905211		4 - 6	3 - 6	50
904964		4 - 6	5,5 - 9	50
905864		10	5,5 - 9	50

As dimensões e especificações podem ser alteradas sem aviso prévio..

